

## PESC2065Y

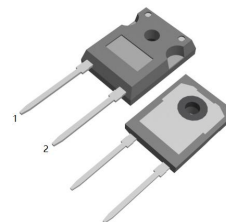
### 20.0AMPS.SIC SCHOTTKY BARRIER DIODE

**FEATURE**

- . 650V Schottky Diode
- . Zero Reverse Recovery/Zero Forward Recovery
- . High Efficiency Operation
- . Extremely Fast Switching
- . Temperature Independent Switching Behavior

**TYPICAL APPLICATIONS**

- . Switch mode power supply
- . Power factor correction Solar Invertor
- . Solar inverter
- . Uninterruptible power supply



TO-247-2L


**MAXIMUM RATINGS** ( $T_C=25^\circ\text{C}$  unless otherwise noted)

Parameter	Symbol	PESC2065Y	Units
Maximum Recurrent Peak Reverse Voltage	$V_{RRM}$	650	V
Maximum RMS Voltage	$V_{RMS}$	455	V
Maximum DC blocking Voltage	$V_{DC}$	650	V
Maximum Average Forward Rectified Current at $T_C = 150^\circ\text{C}$	$I_{F(AV)}$	20	A
Non-Repetitive Peak Forward Surge Current $T_c=25^\circ\text{C}, t_p=8.3 \text{ ms}, \text{ Half Sine Pulse}$	$I_{FSM}$	160	A
Total power dissipation $T_c=25^\circ\text{C}$	$P_D$	136	W
Operation Junction Temperature and Storage Temperature	$T_J, T_{STG}$	-55 to +175	$^\circ\text{C}$

**ELECTRICAL CHARACTERISTICS** ( $T_C=25^\circ\text{C}$  unless otherwise noted)

Parameter	Symbol	Typ	Max	Units	
Forward voltage	$V_F$	$I_F=20\text{A}, T_j=25^\circ\text{C}$	1.3	1.5	V
		$I_F=20\text{A}, T_j=175^\circ\text{C}$	1.4	1.7	
Reverse current	$I_R$	$V_R=650\text{V}, T_j=25^\circ\text{C}$	10	100	$\mu\text{A}$
		$V_R=650\text{V}, T_j=175^\circ\text{C}$	40	400	
Total capacitive charge	$Q_c$	41	---	nC	
Total capacitance	$C$	$V_R=0\text{V}, T_j=25^\circ\text{C}, f=1\text{MHZ}$	1210	---	pF
		$V_R=200\text{V}, T_j=25^\circ\text{C}, f=1\text{MHZ}$	124	---	
		$V_R=400\text{V}, T_j=25^\circ\text{C}, f=1\text{MHZ}$	90	---	

**THERMAL CHARACTERISTICS** ( $T_C=25^\circ\text{C}$  unless otherwise noted)

Parameter	Symbol	Typ	Max	Units
Typical Thermal Resistance Junction to Case	$R_{(JC)}$	1.1	----	$^\circ\text{C/W}$

RATING AND CHARACTERISTIC CURVES

FIG.1-FORWARD CHARACTERISTICS

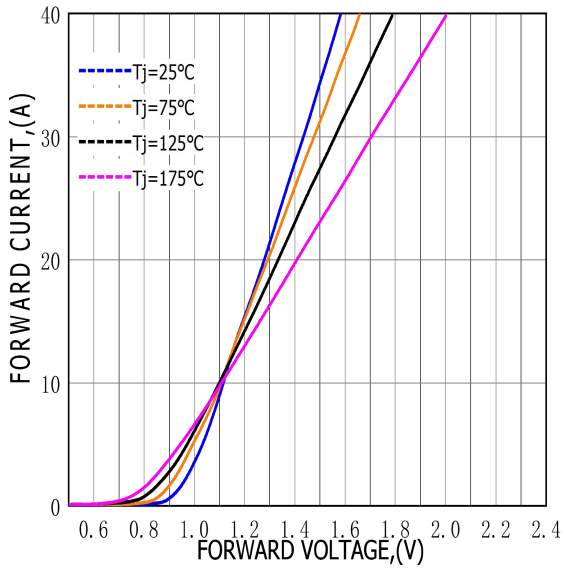


FIG.2-REVERSE CHARACTERISTICS

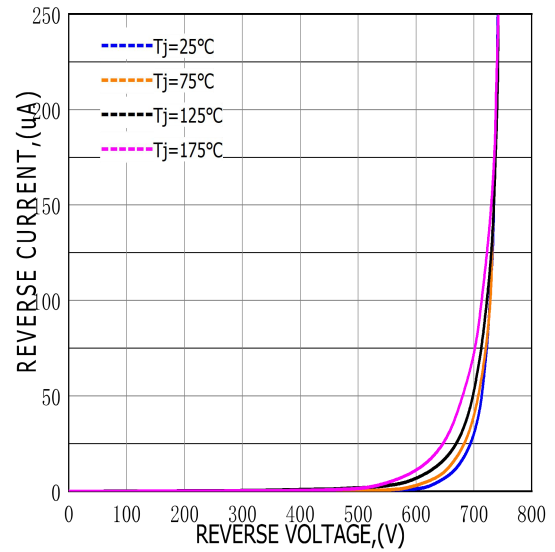


FIG.3-TOTAL CAPACITANCE CHARGE VS REVERSE VOLTAGE

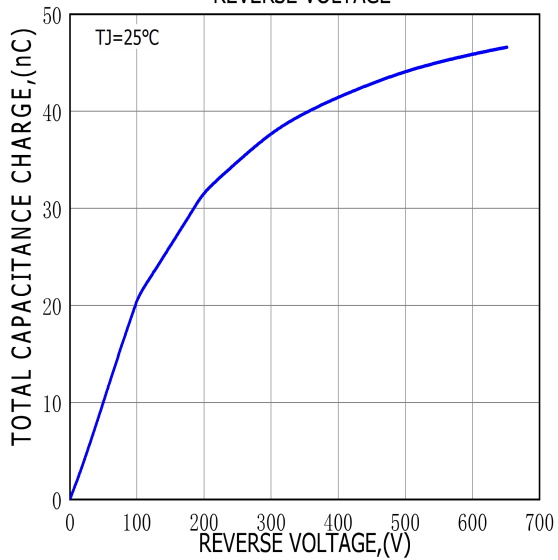
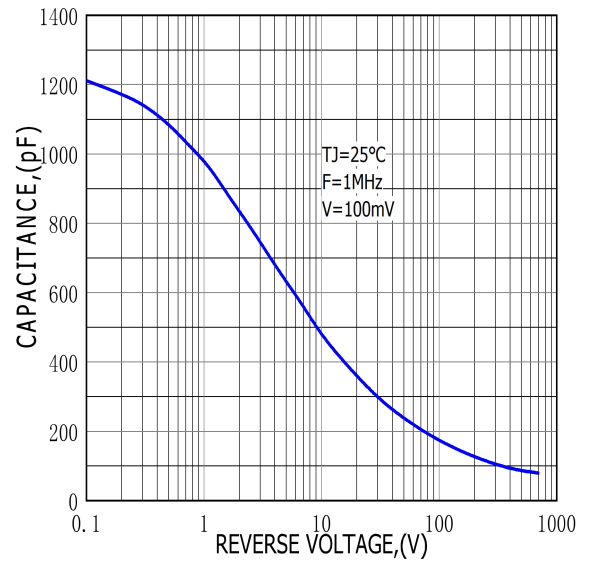
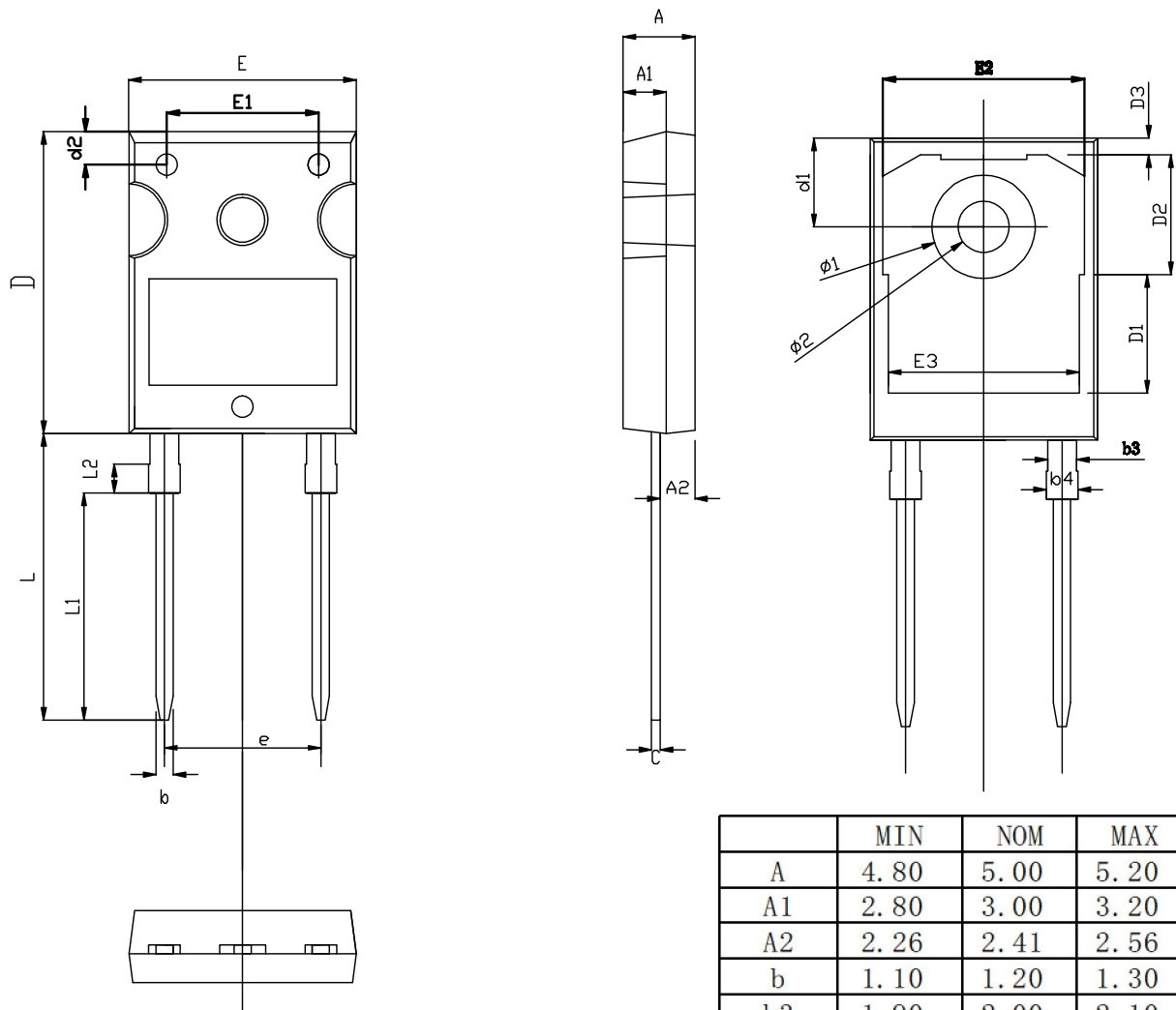


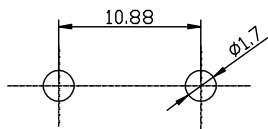
FIG.4-CAPACITANCE VS REVERSE VOLTAGE



## TO-247-2L PACKAGE OUTLINE



RECOMMENDED LAND PATTERN



UNIT: mm

	MIN	NOM	MAX
A	4.80	5.00	5.20
A1	2.80	3.00	3.20
A2	2.26	2.41	2.56
b	1.10	1.20	1.30
b3	1.90	2.00	2.10
b4	2.00	-	2.20
c	0.50	0.60	0.70
D	20.80	21.00	21.20
D1		8.23	
D2		8.32	
D3		1.17	
d1	6.00	6.15	6.30
d2	2.20	2.30	2.40
E	15.60	15.80	16.00
E1		10.50	
E2		14.02	
E3		13.50	
e		10.88	
L	19.72	19.92	20.12
L1		15.79	
L2		1.98	
$\phi_1$	7.10	7.19	7.30
$\phi_2$	3.50	3.60	3.70